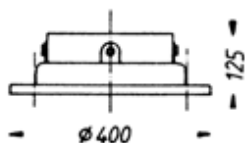




Candelabra THK-620 „Baden-Baden“



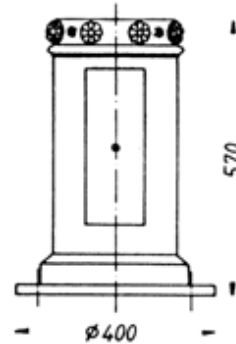
THK-620
Candelabra top with Spigot \varnothing 60 mm connection or flange connection
weight: approx 90 kg



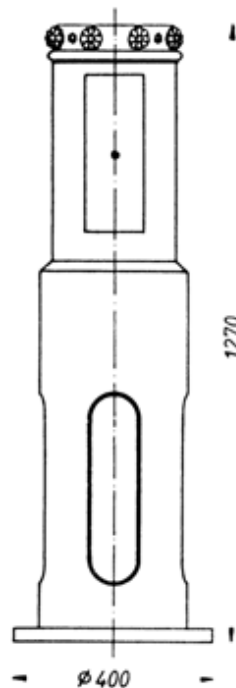
THK-620-C
Candelabra base for screwing
Weight: 25 kg



THK-620-M
Candelabra Upper part
for multiarm luminaires



THK-620-A
Candelabra base with door
for screwing
Weight: approx 44 kg



THK-620-E
Candelabra base with door for burying
Weight aprox: approx 90 kg